

Summary:

Players	HT	Class	School	Summary	Similar to
Andrej Shoshkikj	6'2	Fr	Stony Brooks (D1)	Efficient scorer, dont have much rim pressure, active hand	
Cayden Vasko	6'6	Jr	Wofford (D1)	Tall guard, good at facilitate from pnr, can shoot 3s	
Logan Carey	6'3	Jr	Maine (D1)	Mostly attack the rim to score or dump off, can draw foul but not good free throw shooter, can shoot 3s with space	
Justin Menard	6'3	So	Marist (D1)	Drive to pass, mostly score from 3s, like to swipe at ball, don't draw a lot of foul	
Trevan Leonhardt	6'4	Jr	Utah Valley (D1)	Like to get in the paint, efficient scorer inside, can shoot from deep, turnover prone, active hand get out in transition	
Jakai Sanders	6'3	So	LeMoyne (D1)	Looking to get inside, good passer in pnr situation, can C&S 3s, below average finisher, question on D	
All Wright	6'3	So	Xavier (D1)	Efficient low tov players with low usg, can C&S and attack close out, efficient in transition, don't have rim pressure, not really impact anything on defense	
Adriel Nyorha	6'5	Fr	USF (D1)	Tall lead guard, play with his own pace, can shoot 3s, can switch to bigger players	
Elijah Perryman	6'2	Fr	Utah State (D1)	Quick, can both score and dump off at the rim, can shoot from deep, read pnr well	
Jaden Miller	6'1	RS So	East Central (D2)	True Point Guard. Highest AST% in D2 Low scoring. Low 3 point rate. Low USG. Attack the rim, draw foul	Jeremy Fear Jr
Ryan Blount	6'6	So	Tampa (D2, FL)	41% 3pt (both year, mostly C&S), team leading score, spot up in transition (fast pace team), Can draw foul	Meleek Thomas
Lazerek Houston	6'0	Fr	Central Missouri (D2)	Highest scoring potential. Athletic/High Flyer. Can get downhill. High USG. High AST high TOV. Good shooter	Kingston Flemings
Jorge Sanchez Ramos	6'3	RS JR	Ky Wesleyan (D2)	High AST% Lower USG guard. Run a lot of PNR. 40% 3pt. Don't draw many fouls. Previously RS in La Salle	Braden Smith
Kai Simpson	6'2	So	Thomas More (D2, KY)	Above average 3p shooter. Create most of his shots. High USG. A little heavy on mid range.	Kingston Flemings
Jordan Clark	6'2	Jr	Central Wash. (D2, WA)	Less rim pressure. Efficient in transition. Questionable left handed finishes. Solid playmaking. Mostly C&S 3s	Ja'Kobi Gillespie
Zach Howell	6'5	Jr	Drury (D2)	More of a spot up shooter (quick release), High efficiency, Low TOV%, Low rim attempts and efficiency	Meleek Thomas (for efficiency and low tov)
Ben Kopetzki	6'1	So	Concordia-St.Paul (D2)	Inefficient and low attempts at the rim, more of a scoring guard, create most of his own shot	Keaton Wagler
Tre Powell	6'0	So	Goldey-Beacom (D2)	High scoring efficiency, drawing foul at high rate, primary ball handler, High in Foul committed and Turnover	Darius Acuff Jr
Brandon Fussell	6'1	Jr	Montevallo (D2)	Efficient scorer and playmaker, don't draw many foul when driving inside, great shooter, active hand	

Micah Bays	6'2	So	Central St. (OH, D2)	Efficient scorer, jumpshot heavy, can and will shoot from deep, high TOV
Markus Pastorcic-Staun	6'3	Jr	Colo. Sch. of Mines (D2)	only played 13 games (INJ), great at getting to the rim, finishing at high rate and drawing fouls, low attempts on 3s but efficient.
Rocco Lamuno	6'4	So	Spring Hill (D2)	Lefty, humpshot heavy, more efficient inside on transition, don't seem to get inside in half court, good rebounder
Will Davies	6'4	So	St. Anselm (D2)	Efficient players with good physicality, Can drive inside and playmake, solid all around scorer, but still have high TO game
Trey Nelson	6'0	Jr	Clarion (D2)	Efficient scorer and playmaker, active hand, good physical, dont run pnr, improve on shooting every year, attack the rim more this year than last year.
Curtis Jackson	6'0	Jr	Davenport (D2)	Flashy passer, collapse defense and make play for other, average efficient at the rim and 3s, higher toppg, active hand lead to fast break opportunity
Pace Prosser	6'2	So	Gannon (D2)	down year from 3s (down 10%), make effort plays on both ends, questionable skill and physical ability, would be a great effort/energy guys
Jeremiah Anderson	6'1	Jr	Felician (D2)	
Miles Gurske	6'1	Jr	Mont. St. Billings (D2)	
Chris Holley	6'2	Sr	Chico St. (D2)	
JR Jacobs	5'11	Jr	Ga Southwestern (D2)	

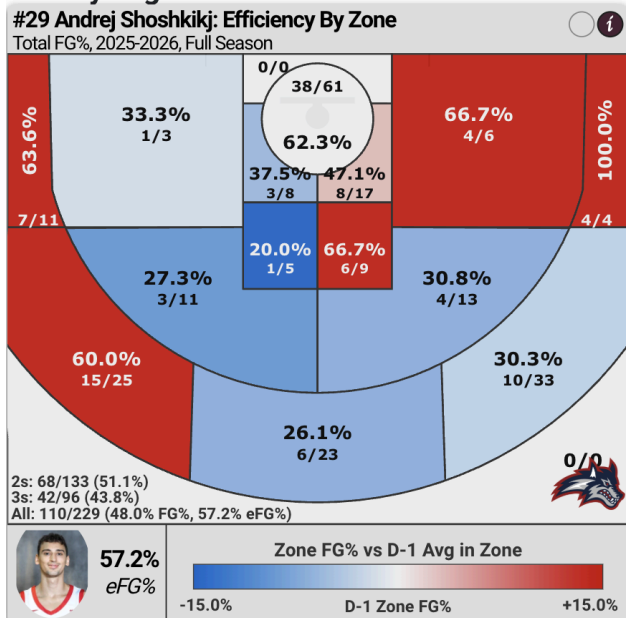
D1:

Andrej Shoshkikj (D1, Stony Brooks): FR, 6'2

Stats: 10.4 PPG | 2.5 APG | 2.6 REB | 1.5 STL | 1.9 TOV | 48 FG% | 43.8 3P% | 96.1 FT%
Records: 17-15

J#	Player	Usage & Ball Handling					Shooting				Play Style														
		AST%	AST Ratio	TOV%	AST/TOV	USG%	TS%	2P%	3P%	FT%	ORB%	FTA Rate	3PAr												
#29	Andrej Shoshkikj	19.9%	77	19.4%	70	18.2%	21	1.32x	49	20.4%	59	61.9%	92	51.1%	67	43.8%	96	96.1%	98	1.6%	20	22.3%	28	41.9%	40

FG% By Region



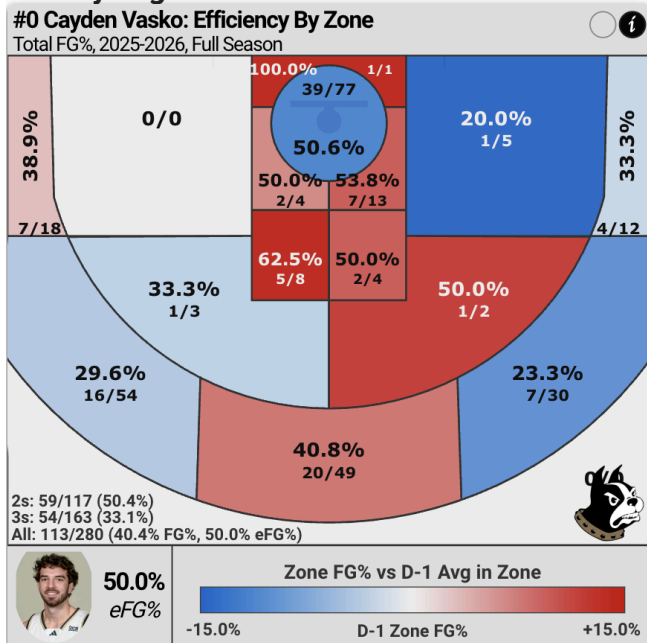
- Mostly facilities and operate from the top
- Did not have a lot of rim pressures, don't draw a lot of foul
- Don't get out on transition (slow paced system)
- Efficiency scorer and free throw shooter
- Mid range and floater heavy when inside the line
- Active hand in gap

Cayden Vasko (D1, Wofford): JR, 6'6

Stats: 11 PPG | 4.1 APG | 4.7 REB | 1.1 STL | 1.1 TOV | 40.4 FG% | 33.1 3P% | 80.6 FT%
Records: 19-13

Player	Usage & Ball Handling						Shooting						Play Style											
	AST%	AST Ratio	TOV%	AST/TOV	USG%		TS%	2P%	3P%	FT%		ORB%	FTA Rate	3PAr										
#0 Cayden Vasko	22.6%	84	26.7%	90	10.0%	80	3.65x	99	17.7%	37	53.7%	51	50.4%	64	33.1%	50	80.6%	69	3.6%	64	22.1%	28	58.2%	70

FG% By Region



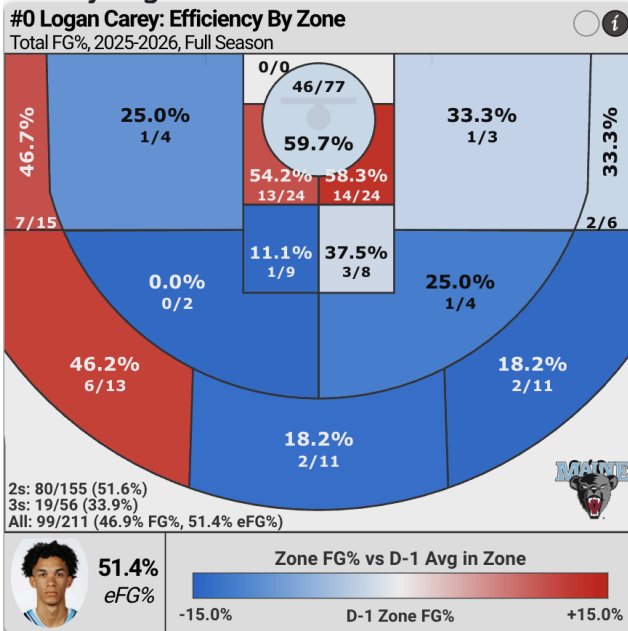
- When inside, looking more to pass out/dump off than score
- Below average finisher, don't get to the line much
- Can shoot 3s off dribble, off screen, spot up, in pnr
- Tall guard, can pass over defender in pnr
- Can post up and facilitate from there

Logan Carey (D1, Maine): JR, 6'3

Stats: 9.1 PPG | 2.4 APG | 2.7 REB | 1.6 STL | 1.8 TOV | 46.9 FG% | 33.9 3P% | 66 FT%
 Records: 8-24

J#	Player	Usage & Ball Handling						Shooting						Play Style											
		AST%	AST Ratio	TOV%	AST/TOV	USG%	TS%	2P%	3P%	FT%	ORB%	FTA Rate	3PAr												
#0	Logan Carey	22.2%	83	19.3%	70	17.7%	23	1.35x	51	22.1%	69	55.5%	63	51.6%	69	33.9%	56	66.0%	20	3.8%	67	47.4%	86	26.5%	15

FG% By Region



- Most of the points and assists come in the paint, efficient finisher in transition
- Have good rim pressure, can get to the line but only 66 FT%
- Active hand in gap and passing lane
- Can shoot from deep with space
- Slightly high tov%, but may be affected by team system/personnel.

Justin Menard (D1, Marist): SO, 6'3

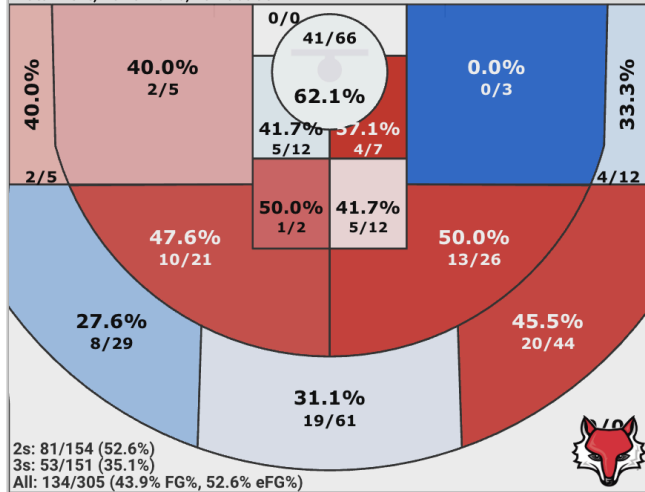
Stats: 12.8 PPG | 3.8 APG | 2.9 REB | 1.3 STL | 2.1 TOV | 43.9 FG% | 35.1 3P% | 92.6 FT%
 Records: 19-12

J#	Player	Usage & Ball Handling						Shooting						Play Style											
		AST%	AST Ratio	TOV%	AST/TOV	USG%	TS%	2P%	3P%	FT%	ORB%	FTA Rate	3PAr												
#2	Justin Menard	26.7%	92	22.1%	80	16.0%	32	1.77x	73	24.0%	80	57.3%	75	52.6%	73	35.1%	62	92.6%	97	0.7%	3	22.3%	28	49.5%	55

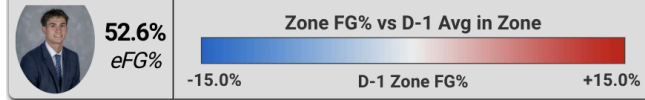
FG% By Region

#2 Justin Menard: Efficiency By Zone

Total FG%, 2025-2026, Full Season



2s: 81/154 (52.6%)
3s: 53/151 (35.1%)
All: 134/305 (43.9% FG%, 52.6% eFG%)



- Most likely looking to pass when inside
- Jumpshot (mid range) heavy, will shoot from deep
- Most of the points come from ATB 3s, can shoot running off screen and handoff
- Don't draw a lot of foul
- Active hands like to swipe at the ball

Trevan Leonhardt (D1, Utah Valley): JR, 6'4

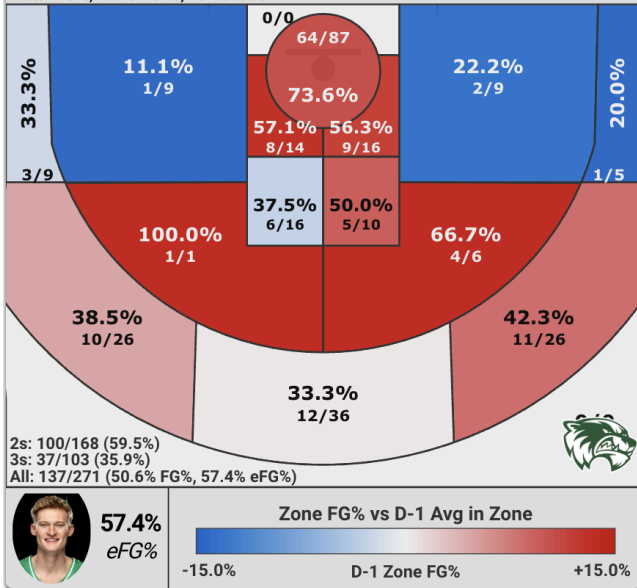
Stats: 12.0 PPG | 5.7 APG | 5.4 REB | 2.2 STL | 2.9 TOV | 50.6 FG% | 35.9 3P% | 75.6 FT%
Records: 25-9

J#	Player	Usage & Ball Handling						Shooting						Play Style											
		AST%	AST Ratio	TOV%	AST/TOV	USG%	TS%	2P%	3P%	FT%	ORB%	FTA Rate	3PAr												
#10	Trevan Leonhardt	28.4%	94	30.8%	96	22.9%	8	1.95x	80	18.3%	42	60.7%	90	59.5%	92	35.9%	68	75.6%	49	2.2%	35	30.3%	52	38.0%	33

FG% By Region

#10 Trevan Leonhardt: Efficiency By Zone

Total FG%, 2025-2026, Full Season



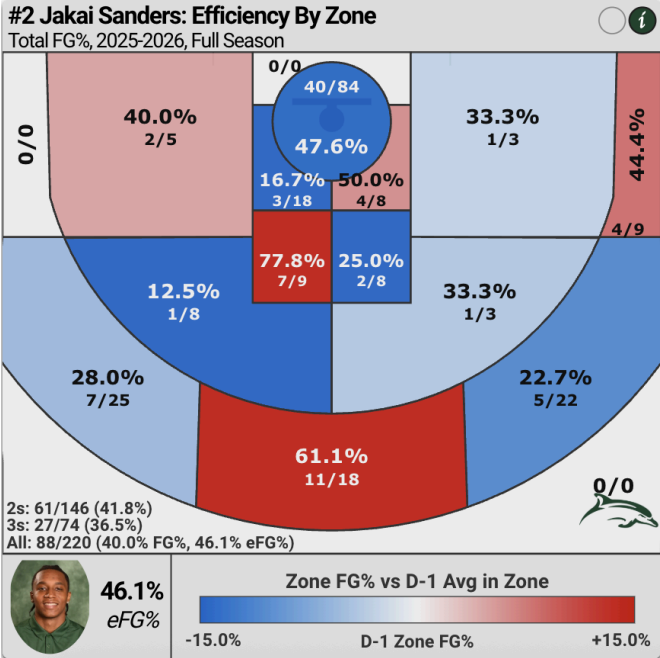
- Looking to get inside for score and facilitate
- Active hand, look to get out in transition
- Don't draw many fouls, skinny frame, might be avoid contact at the rim at both end
- High TOV%
- Can shoot from deep

Jakai Sanders (D1, LeMoyne): SO, 6'3

Stats: 10.8 PPG | 4.4 APG | 3.4 REB | 0.9 STL | 2.4 TOV | 40.0 FG% | 36.5 3P% | 74.6 FT%
 Records: 15-17

J#	Player	Usage & Ball Handling						Shooting						Play Style											
		AST%	AST Ratio	TOV%	AST/TOV	USG%	TS%	2P%	3P%	FT%	ORB%	FTA Rate	3PAr												
		Min	Max	Min	Max	Min	Max	Min	Max	Min	Max	Min	Max	Min	Max	Min	Max								
#2	Jakai Sanders	27.8%	93	26.0%	89	19.6%	16	1.79x	74	21.1%	62	54.3%	55	41.8%	23	36.5%	71	74.6%	44	2.3%	38	60.9%	95	33.6%	25

FG% By Region



- Looking to get inside to score and facilitate
- Run a lot of pnr and playmake well off it
- Not efficient finisher, but get to the free throw line well
- High TOV%
- Questionable effort on D

All Wright (D1, Xavier): SO, 6'3

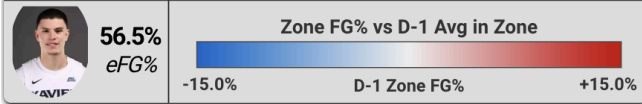
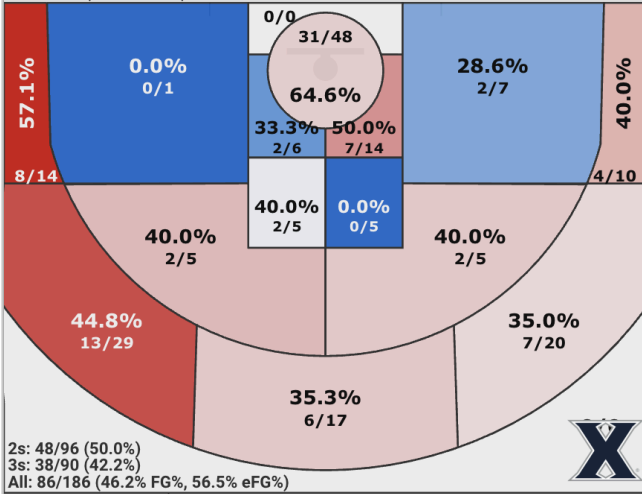
Stats: 7.5 PPG | 2.0 APG | 1.6 REB | 0.5 STL | 0.6 TOV | 46.2 FG% | 42.2 3P% | 84.1 FT%
Records: 15-18

J#	Player	Usage & Ball Handling						Shooting						Play Style											
		AST%		AST Ratio		TOV%		AST/TOV		USG%		TS%		2P%		3P%		FT%		ORB%		FTA Rate		3PAr	
Min	Max	Min	Max	Min	Max	Min	Max	Min	Max	Min	Max	Min	Max	Min	Max	Min	Max	Min	Max	Min	Max	Min	Max		
#3	All Wright	15.3%	60	22.4%	81	8.9%	87	3.25x	98	15.3%	20	60.1%	88	50.0%	63	42.2%	94	84.1%	82	1.3%	15	23.7%	32	48.4%	53

FG% By Region

#3 All Wright: Efficiency By Zone

Total FG%, 2025-2026, Full Season



- Efficient players with low tov
- Balance shot diet
- Don't have a lot of rim pressure, don't draw foul at the rim
- Can spot up and finish efficiently in transition
- Weird shot mechanic, mostly C&S 3s
- Can attack close out well

Braeden Speed (D1, Loyola Maryland): SO, 6'3

Stats: 15.8 PPG | 3.7 APG | 4.4 REB | 1.0 STL | 2.0 TOV | 45.2 FG% | 36.7 3P% | 80.8 FT%

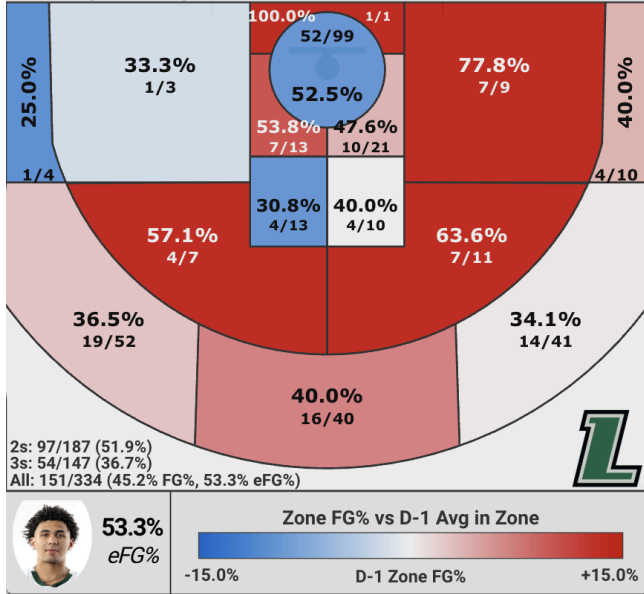
Records: 12-20

J#	Player	Usage & Ball Handling										Shooting						Play Style							
		AST%		AST Ratio		TOV%		AST/TOV		USG%		TS%		2P%		3P%		FT%		ORB%		FTA Rate		3PAr	
Min	Max	Min	Max	Min	Max	Min	Max	Min	Max	Min	Max	Min	Max	Min	Max	Min	Max	Min	Max	Min	Max	Min	Max		
#0	Braeden Speed	22.9%	84	19.5%	71	12.9%	56	1.88x	78	23.5%	77	59.5%	86	51.9%	70	36.7%	72	80.8%	70	2.6%	45	43.7%	81	44.0%	44

FG% By Region

#0 Braeden Speed: Efficiency By Zone

Total FG%, 2025-2026, Full Season



- Efficient scorer anywhere except the rim, most of his shot is self creation
- Jumpshot heavy
- Don't have a lot of rim pressure to create play for others
- Good at drawing foul

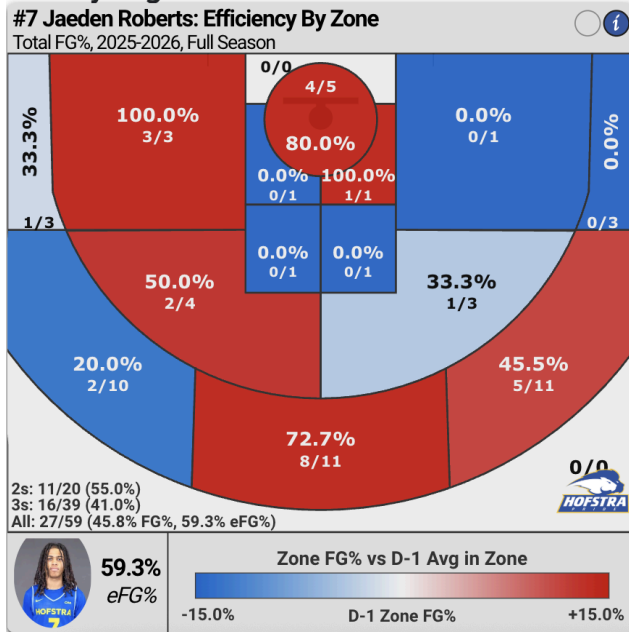
Jaeden Roberts (D1, Hofstra): FR, 6'3

Stats: 3.6 PPG | 0.7 APG | 0.5 REB | 0.2 STL | 0.2 TOV | 45.8 FG% | 41.0 3P% | 62.5 FT%

Records: 24-11

J#	Player	Usage & Ball Handling						Shooting						Play Style											
		AST%	AST Ratio	TOV%	AST/TOV	USG%	TS%	2P%	3P%	FT%	ORB%	FTA Rate	3PAr												
#7	Jaeden Roberts	19.0%	73	18.2%	65	7.4%	94	3.00x	97	21.7%	66	60.0%	87	55.0%	81	41.0%	91	62.5%	15	2.2%	36	13.6%	9	66.1%	83

FG% By Region



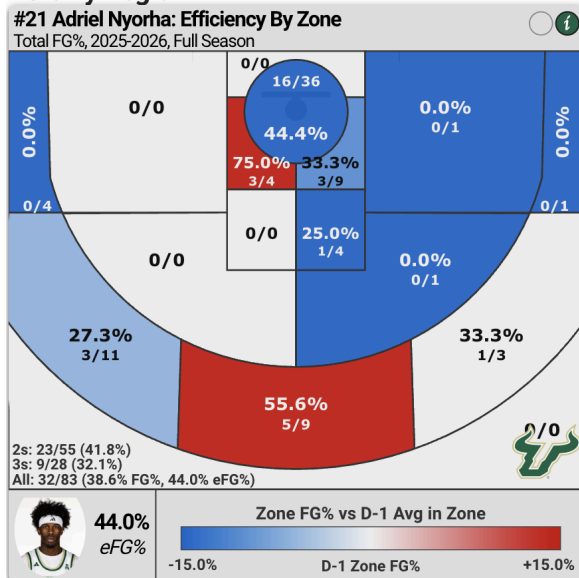
- Thin frame, dont play a lot last year, mostly as a spot up shooter
- Can shoot from deep
- Fit to be a scoring spark off the bench

Adriel Nyorha (D1, USF): FR, 6'5

Stats: 3.7 PPG | 1.8 APG | 1.6 REB | 0.5 STL | 1.2 TOV | 38.6 FG% | 32.1 3P% | 67.9 FT%
Records: 25-9

J#	Player	Usage & Ball Handling						Shooting						Play Style											
		AST%	AST Ratio	TOV%	AST/TOV	USG%	TS%	2P%	3P%	FT%	ORB%	FTA Rate	3PAr												
#21	Adriel Nyorha	30.2%	96	26.9%	91	23.9%	7	1.53x	62	22.2%	69	48.3%	21	41.8%	23	32.1%	44	67.9%	26	4.6%	77	33.7%	61	33.7%	25

FG% By Region



- Tall lead guard, play with patient at his own pace

- Can run pnr, have good feel
- Can shoot 3s
- Can get better at a finisher with more play time
- Can switch to taller players on D

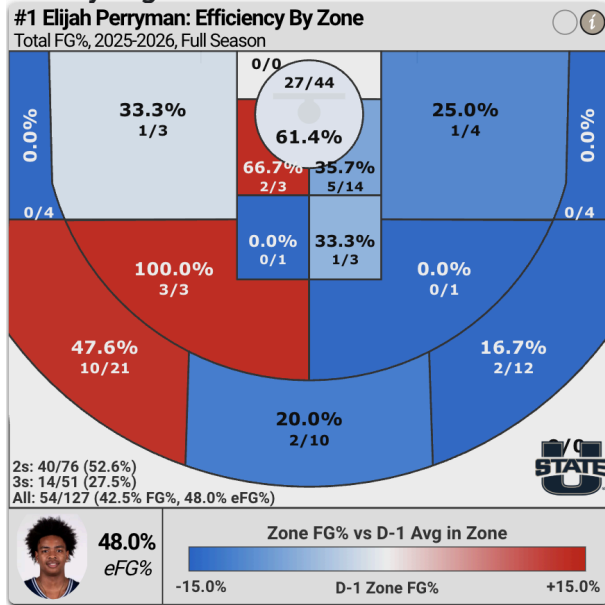
Elijah Perryman (D1, Utah State): FR, 6'2

Stats: 4.3 PPG | 2.9 APG | 1.5 REB | 0.7 STL | 1.3 TOV | 42.5 FG% | 27.5 3P% | 80.0 FT%

Records: 29-7

J#	Player	Usage & Ball Handling					Shooting						Play Style												
		AST%	AST Ratio	TOV%	AST/TOV	USG%	TS%	2P%	3P%	FT%	ORB%	FTA Rate	3PAr												
#1	Elijah Perryman	35.4%	98	35.0%	98	24.8%	5	2.17x	86	20.2%	57	52.7%	44	52.6%	73	27.5%	23	80.0%	67	0.8%	5	27.6%	43	40.2%	37

FG% By Region



- Quick guard, can still play patiently
- Skill finisher, efficient at the rim, can also draw help pass out for assist
- Can shoot from deep
- Can read pnr well

D2:

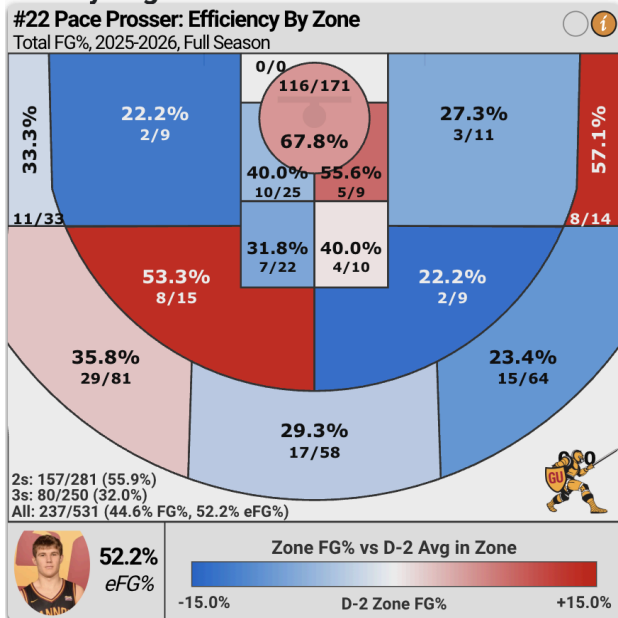
Pace Prosser (D2, Gannon): So, 6'2

Stats: 18.6 PPG | 4.5 APG | 5.4 REB | 2.2 STL | 2.0 TOV | 44.6 FG% | 32.0 3P% | 88.7 FT%

Record: 34-3

J#	Player	Usage & Ball Handling					Shooting						Play Style												
		AST%	AST Ratio	TOV%	AST/TOV	USG%	TS%	2P%	3P%	FT%	ORB%	FTA Rate	3PAr												
#22	Pace Prosser	24.3%	92	20.0%	75	11.2%	78	2.24x	93	25.0%	86	57.5%	72	55.9%	81	32.0%	44	88.7%	93	5.1%	76	28.2%	49	47.1%	55

FG% By Region



- Down year on 3pt% (40% FR -> 30% SO)
- Good at getting to the rim. Efficient scorer, collapse defense pass out, draw foul. A lot of it is from transition situation
- Good rebounder on both end (1.5 OREB/G)
- Active hand in gap and passing lane
- Give a lot effort on d and on oreb
- Make winning play, but not sure about the skill and physical ability to be a lead guard
- Would be a great energy guy off the bench

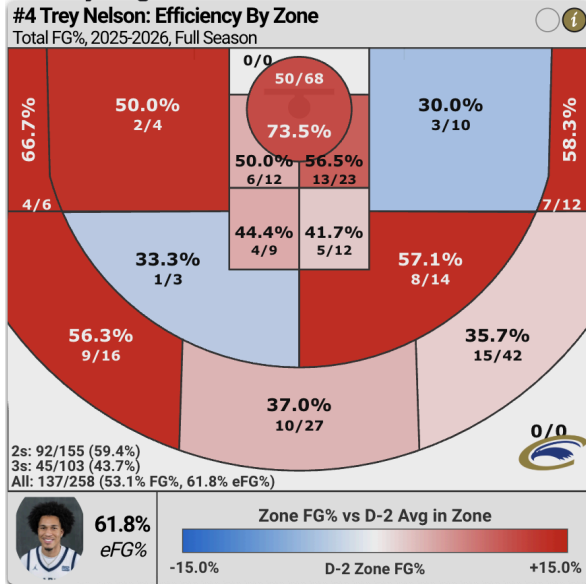
Trey Nelson (D2, Clarion): Jr, 6'0

Stats: 14.8 PPG | 6.7 APG | 3.6 REB | 2.2 STL | 2.7 TOV | 53.1 FG% | 43.7 3P% | 85.1 FT%

Record: 12-16

J#	Player	Usage & Ball Handling										Shooting						Play Style							
		AST%		AST Ratio		TOV%		AST/TOV		USG%		TS%		2P%		3P%		FT%		ORB%		FTA Rate		3PAr	
		Min	Max	Min	Max	Min	Max	Min	Max	Min	Max	Min	Max	Min	Max	Min	Max	Min	Max	Min	Max	Min	Max		
#4	Trey Nelson	32.5%	99	32.6%	98	19.4%	22	2.50x	96	17.7%	37	66.6%	98	59.4%	90	43.7%	95	85.1%	86	3.1%	47	36.4%	69	39.9%	41

FG% By Region



- School single season assists records (186 assists), All PSAC West first team
- Lefty
- Offense kind of similar to our, don't run a lot of pnr,
- Attack the rim more this year to both score and dish out (shy away from it last year)
- Fast, push on fast break
- Make simple, efficient plays, C&S 3s, straight line drive
- Good strength for his size, absorb contact on drive
- Active hand, cause TOV
- Better shooting number every year, can shoot from deep

Jaden Miller (D2, East Central): RS Soph, 6'1

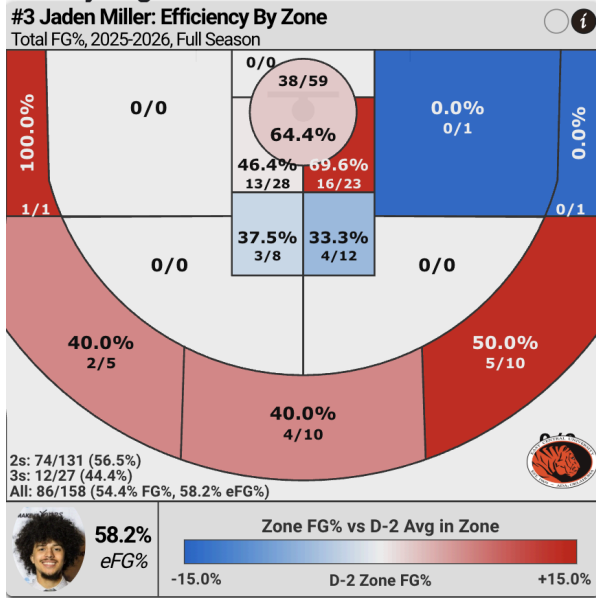
Stats: 10.7 PPG | 8.3 APG | 3.4 REB | 0.8 STL | 3.2 TOV | 46.7 FG% | 44.4 3P% | 73.8 FT%
Record: 15-14

Heard from Northern Colorado, UT Chattanooga, Southern Mississippi, Southeastern Louisiana, UNC Asheville, Houston Christian, Cleveland State, Arkansas State, Morehead State, NC A&T, USC Upstate, and South Dakota

J#	Player	Usage & Ball Handling					Shooting					Play Style													
		AST%	AST Ratio	TOV%	AST/TOV	USG%	TS%	2P%	3P%	FT%	ORB%	FTA Rate	3PAr												
#3	Jaden Miller	48.8%	100	42.3%	99	28.2%	4	2.60x	96	18.7%	46	65.7%	98	56.5%	82	44.4%	96	77.0%	59	1.1%	7	77.2%	98	17.1%	8

J#	Player	Usage & Ball Handling					Shooting					Play Style													
		AST%	AST Ratio	TOV%	AST/TOV	USG%	TS%	2P%	3P%	FT%	ORB%	FTA Rate	3PAr												
#1	Jeremy Fears Jr.	53.2%	100	38.2%	99	15.6%	36	3.96x	99	24.1%	80	59.2%	84	48.6%	54	32.1%	44	88.8%	93	1.7%	23	58.7%	94	30.4%	20

FG% By Region



- Played in a slow pace offense last year
- Highest AST% in D2
- Getting to the rim, drawing fouls (4.7 FTA/G | season high: 18 FTA vs Okla. Baptist).
- Like to collapse the defense and dump off at the rim.
- Over 50% of AST come from when he in the paint
- Concern: low three point rate, Previous year was 29.5 3P% (2 3PA/G)

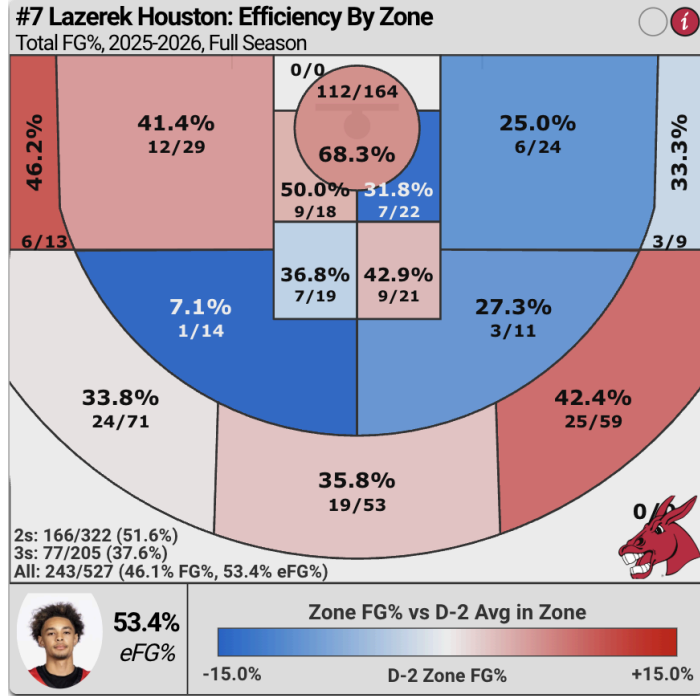
Lazerek Houston (D2, Central Mo.): FR, 6'0

Stats: 20.7 PPG | 5.1 APG | 4.0 REB | 1.5 STL | 3 TOV | 46.1 FG% | 37.6 3P% | 74.7 FT%
Records: 24-10

J#	Player	Usage & Ball Handling					Shooting					Play Style													
		AST%	AST Ratio	TOV%	AST/TOV	USG%	TS%	2P%	3P%	FT%	ORB%	FTA Rate	3PAr												
#7	Lazerek Houston	32.2%	99	19.4%	73	14.2%	54	1.70x	80	32.9%	99	57.2%	69	51.6%	64	37.6%	77	74.7%	50	1.7%	16	30.7%	54	38.9%	39

J#	Player	Usage & Ball Handling					Shooting					Play Style													
		AST%	AST Ratio	TOV%	AST/TOV	USG%	TS%	2P%	3P%	FT%	ORB%	FTA Rate	3PAr												
#4	Kingston Flemings	32.9%	98	24.5%	86	11.4%	69	2.85x	96	26.3%	89	56.9%	72	50.4%	64	38.8%	83	84.3%	82	1.8%	26	27.9%	44	22.6%	10

FG% By Region



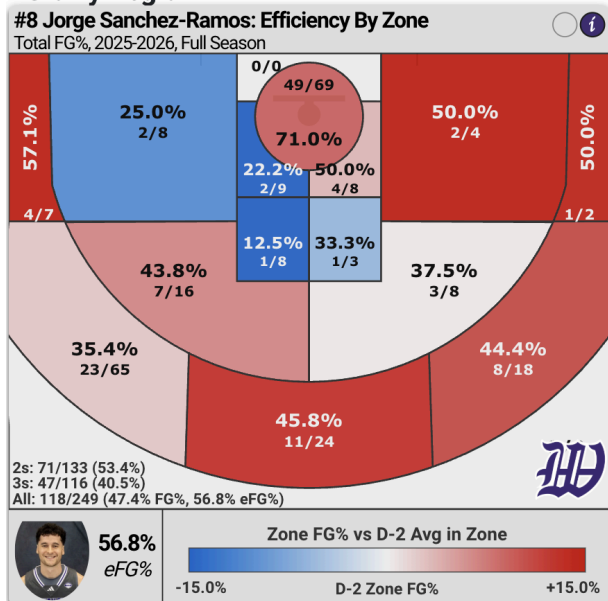
- Athletic (catches multiple lobbs at 6'0). Skilled finisher, getting down hill
- A scorer with a high AST rate (Multiple 27+ PTS, 5+ AST game)
- Shot 6.2 3PA/G (season high 15 3PA vs Washburn)
- High usage. Draw around 5 foul/G (4.9 FTA/G)
- Can push the pace a little bit more
- Over 70% of AST come from when he is in the paint or ATB 3s area.
- Concern: 3 TOPG, took a lot of inefficient mid range

Jorge Sanchez-Ramos (D2, Ky. Wesleyan): RS JR, 6'3

Stats: 13 PPG | 5.5 APG | 3.2 REB | 1.3 STL | 2 TOV | 47.4 FG% | 40.5 3P% | 75.3 FT%
Records: 16-13

J#	Player	Usage & Ball Handling					Shooting				Play Style														
		AST%	AST Ratio	TOV%	AST/TOV	USG%	TS%	2P%	3P%	FT%	ORB%	FTA Rate	3PAr												
#8	Jorge Sanchez-Ramos	31.3%	98	29.8%	96	15.9%	43	2.68x	97	20.9%	62	60.1%	85	53.4%	72	40.5%	88	75.3%	54	1.5%	14	29.3%	51	46.6%	54
#3	Braden Smith	43.6%	99	36.7%	99	18.8%	18	3.08x	97	23.8%	79	56.6%	70	50.2%	63	36.7%	72	83.0%	78	2.3%	38	26.9%	41	39.8%	36

FG% By Region



- Transfer from La Salle last year. Played a little bit FR year, but sit out the next two years (3 years at La salle)
- Liked to run PNR. Can get downhill or pull up in mid range from it.
- 40 3P% on 4.5 3PA/G. Can shoot and create own shot well off catches. Can shoot long 3s
- Don't draw a lot of foul at the rim (2.8 FTA/G)
- Most 66% of AST is when he is in the paint or ATB 3s area.
- Not a fastbreak player

Ryan Blount (D2, Tampa): SO, 6'6

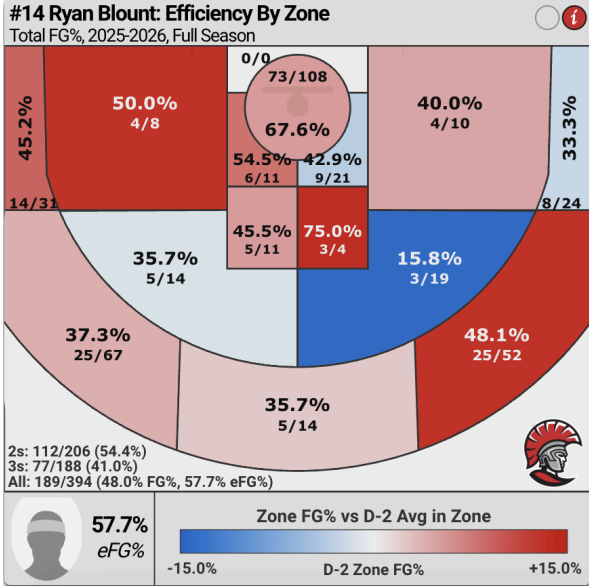
Stats: 21 PPG | 3.1 APG | 7.3 REB | 1.4 STL | 2.1 TOV | 48 FG% | 41 3P% | 83.1 FT%

Records: 16-12

USF Tulane Temple Wyoming Colorado St

		Usage & Ball Handling								Shooting						Play Style									
J#	Player	AST%	AST Ratio	TOV%	AST/TOV	USG%	TS%	2P%	3P%	FT%	ORB%	FTA Rate	3PAr												
		Min	Max	Min	Max	Min	Max	Min	Max	Min	Max	Min	Max												
#14	Ryan Blount	16.5%	70	14.4%	49	11.4%	76	1.47x	70	25.2%	86	63.3%	94	54.4%	76	41.0%	89	83.1%	80	6.3%	87	40.6%	76	47.7%	56
#1	Meleek Thomas	13.4%	52	14.4%	46	6.5%	96	2.57x	93	23.8%	79	56.2%	68	44.5%	33	42.0%	94	85.0%	85	3.6%	64	21.9%	27	42.3%	41

FG% By Region



- Consistent shooter (both over 40% this year and last year)
- All 3s were from C&S/Spot up.
- 25% of the shots come from transition. Like to spot up in transition (Tampa is a fast paced team)
- Team leading scorer. Took over 20% of the team shot and FT
- Most of the assist come from drive and dump off
- Draw around 4 foul/g (5.7 FTA/G)

Kai Simpson (D2, Thomas More): Soph, 6'2

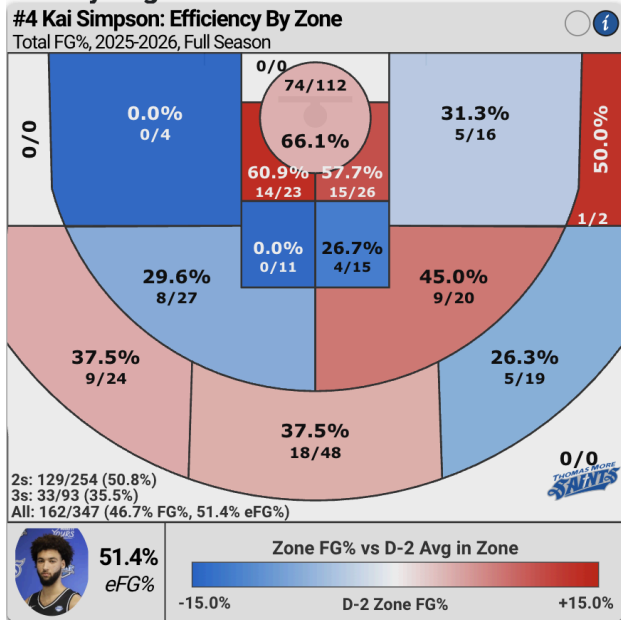
Stats: 18.9 PPG | 4.3 APG | 4.5 REB | 0.8 STL | 2 TOV | 46.7 FG% | 35.5 3P% | 73.8 FT%
Records: 12-15

Hear from Jax State Mount St Marys Robert MNorris Samford Missouri St WKU

		Usage & Ball Handling								Shooting						Play Style									
J#	Player	AST%		AST Ratio		TOV%		AST/TOV		USG%		TS%		2P%		3P%		FT%		ORB%		FTA Rate		3PAr	
	kai	Min	Max	Min	Max	Min	Max	Min	Max	Min	Max	Min	Max	Min	Max	Min	Max	Min	Max	Min	Max	Min	Max	Min	Max
#4	Kai Simpson	32.1%	99	18.4%	69	10.8%	81	2.08x	91	33.8%	99	56.0%	64	50.8%	60	35.5%	63	73.8%	47	4.6%	70	37.5%	70	26.8%	20

		Usage & Ball Handling								Shooting						Play Style									
J#	Player	AST%		AST Ratio		TOV%		AST/TOV		USG%		TS%		2P%		3P%		FT%		ORB%		FTA Rate		3PAr	
	king	Min	Max	Min	Max	Min	Max	Min	Max	Min	Max	Min	Max	Min	Max	Min	Max	Min	Max	Min	Max	Min	Max	Min	Max
#4	Kingston Flemings	32.9%	98	24.5%	86	11.4%	69	2.85x	96	26.3%	89	56.9%	72	50.4%	64	38.8%	83	84.3%	82	1.8%	26	27.9%	44	22.6%	10

FG% By Region



- Shooting Profile: Shooting both around 35-36% from 3 last 2 years. A little more heavy on mid range and floater area.
- Played in a slow pace offense last year
- Score off own creation most of the time.
- Draw around 4.5 foul/G (5.4 FTA/G)
- Good rebounder for a guard. 1 ORB/G

Jordan Clark (D2, Central Washington): JR, 6'2

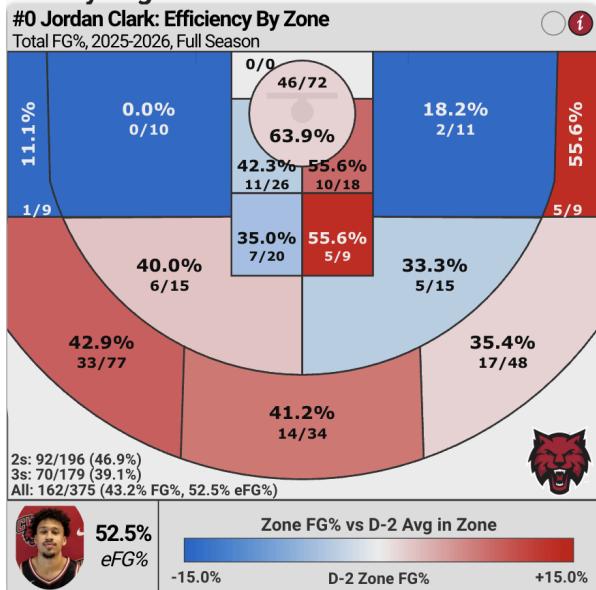
Stats: 18 PPG | 4 APG | 3 REB | 1.1 STL | 1.6 TOV | 43.2 FG% | 39.1 3P% | 85.3 FT%
Records: 16-15

Seattle U, Eastern Washington, WSU, Ga Southern, UC Riverside, Portland st, Siena, Montana state, Cal-State Fullerton

		Usage & Ball Handling								Shooting						Play Style									
J#	Player	AST%		AST Ratio		TOV%		AST/TOV		USG%		TS%		2P%		3P%		FT%		ORB%		FTA Rate		3PAr	
	clarkj	Min	Max	Min	Max	Min	Max	Min	Max	Min	Max	Min	Max	Min	Max	Min	Max	Min	Max	Min	Max	Min	Max	Min	Max
#0	Jordan Clark	24.2%	92	19.0%	72	9.6%	88	2.43x	95	25.8%	88	58.4%	77	46.9%	41	39.1%	83	85.3%	86	2.5%	33	34.4%	64	47.7%	56

		Usage & Ball Handling								Shooting						Play Style									
J#	Player	AST%		AST Ratio		TOV%		AST/TOV		USG%		TS%		2P%		3P%		FT%		ORB%		FTA Rate		3PAr	
	jakd	Min	Max	Min	Max	Min	Max	Min	Max	Min	Max	Min	Max	Min	Max	Min	Max	Min	Max	Min	Max	Min	Max	Min	Max
#0	Ja'Kobi Gillespie	30.9%	96	22.6%	81	12.0%	65	2.44x	92	26.9%	91	54.7%	58	48.8%	56	34.5%	59	81.3%	72	1.7%	24	26.4%	40	53.3%	62

FG% By Region



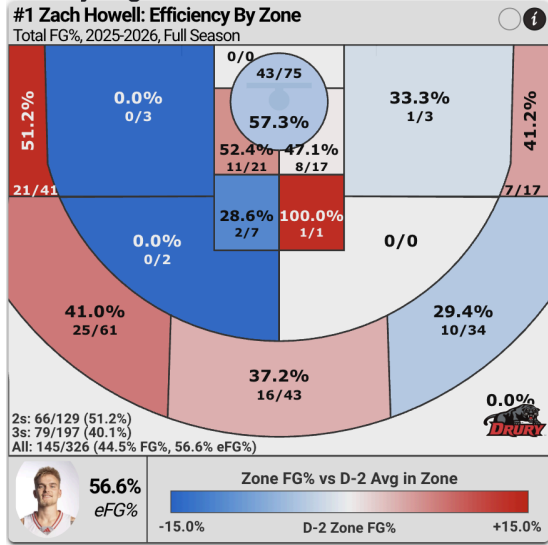
- Lower TOV%
- Most 3s were C&S.
- Can both finish and spot up efficiently in transition.
- A little heavy and very inefficient on mid range (40% of mid range is late in the shot clock)
- Just under 4 fouls drawn per game (4.6 FTA/G)
- Likely looking to pass when inside than score
- Concern: seem to finish less efficiently on the left size.

Zach Howell (D2, Drury): JR, 6'5

Stats: 16.9 PPG | 1.7 APG | 4.7 REB | 1.2 STL | 1.2 TOV | 44.5 FG% | 40.1 3P% | 85.4 FT%
Records: 17-14

J#	Player	Usage & Ball Handling					Shooting				Play Style														
		AST%	AST Ratio	TOV%	AST/TOV	USG%	TS%	2P%	3P%	FT%	ORB%	FTA Rate	3PAr												
#1	Zach Howell	9.1%	63	10.2%	52	8.2%	96	1.38x	88	20.8%	67	62.4%	83	51.2%	36	40.1%	87	85.4%	96	4.1%	11	37.7%	53	60.4%	92
#1	Meleek Thomas	13.4%	52	14.4%	46	6.5%	96	2.57x	93	23.8%	79	56.2%	68	44.5%	33	42.0%	94	85.0%	85	3.6%	64	21.9%	27	42.3%	41

FG% By Region



- Low TOV high shooting efficiency players
- Most shots are 3s. 46% on Corner 3s. Quick release.
- Can attack off close outs. Like to Brunson when cut off. Have some tough attempts at the rim.
- Spot up on transition most of the time.
- Draw 3.5 fouls/g (4.4 FTA/G)
- Concern: Commit 3 foul/g, low rim efficiency

Ben Kopetzki (D2, Concordia-St.Paul): SO, 6'1

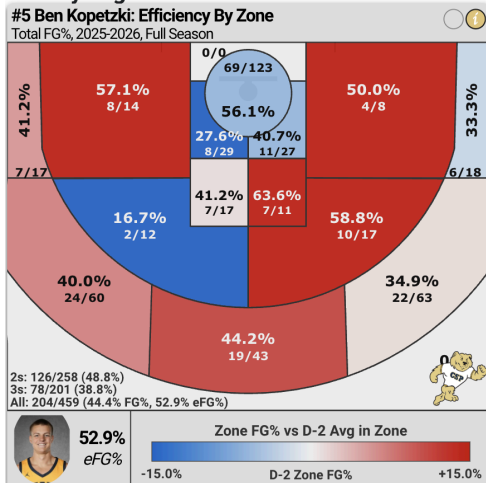
Stats: 21.1 PPG | 3.5 APG | 3.7 REB | 1.3 STL | 2.2 TOV | 44.4 FG% | 38.8 3P% | 88 FT%

Records: 19-10

Interested from Liberty, Oral Roberts, The Citadel, Bowling Green, IU Indy, Furman, Green Bay, South Dakota, NDSU, East Carolina, CSU Fullerton, Chattanooga, Montana and Southern Miss.

J#	Player	Usage & Ball Handling					Shooting					Play Style													
		AST%	AST Ratio	TOV%	AST/TOV	USG%	TS%	2P%	3P%	FT%	ORB%	FTA Rate	3PAr												
#5	Ben Kopetzki	21.2%	86	14.7%	51	11.1%	78	1.55x	74	29.1%	97	58.6%	78	48.8%	51	38.8%	82	88.0%	92	3.0%	44	30.9%	55	43.8%	49
#23	Keaton Wagler	23.6%	86	21.2%	77	10.8%	74	2.48x	92	24.6%	83	61.2%	91	48.8%	56	40.8%	91	79.9%	66	6.9%	92	48.9%	87	48.2%	52

FG% By Region



- Inefficient at the rim
- Most of shot is ATB 3s
- Draw 4 fouls/G (4.9 FTA/G)
- Create a lot of his own shot
- Spot up in transition

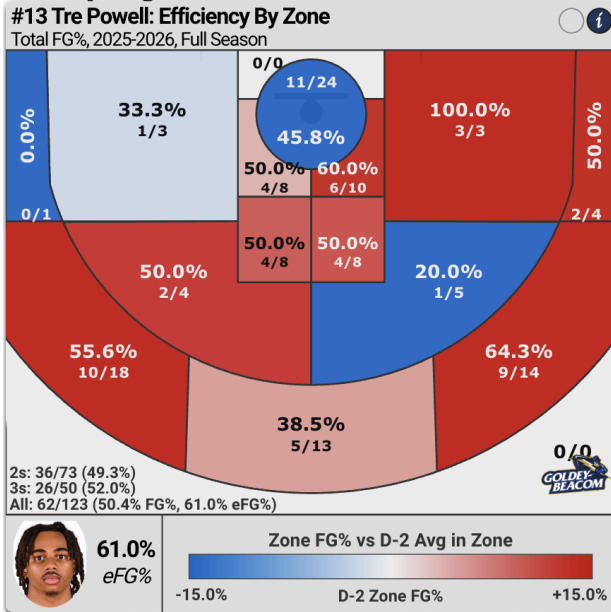
Tre Powell (D2, Goldey-Beacom): SO, 6'0

Stats: 18.6 PPG | 4.7 APG | 4.0 REB | 1.5 STL | 2.8 TOV | 47.3 FG% | 42.2 3P% | 82.8 FT%
 Records: 18-10

J#	Player	Usage & Ball Handling										Shooting						Play Style							
		AST%		AST Ratio		TOV%		AST/TOV		USG%		TS%		2P%		3P%		FT%		ORB%		FTA Rate		3PAr	
		Min	Max	Min	Max	Min	Max	Min	Max	Min	Max	Min	Max	Min	Max	Min	Max	Min	Max	Min	Max	Min	Max	Min	Max
#13	Tre Powell	29.3%	98	21.1%	80	15.9%	42	1.68x	79	26.7%	91	63.2%	94	50.8%	60	42.2%	92	82.8%	79	4.1%	63	54.2%	92	40.7%	43

J#	Player	Usage & Ball Handling										Shooting						Play Style							
		AST%		AST Ratio		TOV%		AST/TOV		USG%		TS%		2P%		3P%		FT%		ORB%		FTA Rate		3PAr	
		Min	Max	Min	Max	Min	Max	Min	Max	Min	Max	Min	Max	Min	Max	Min	Max	Min	Max	Min	Max	Min	Max	Min	Max
#5	Darius Acuff Jr.	32.6%	97	23.6%	84	10.2%	78	3.01x	97	29.3%	96	61.3%	91	50.8%	65	44.6%	97	81.1%	71	1.5%	20	35.8%	65	35.1%	27

FG% By Region



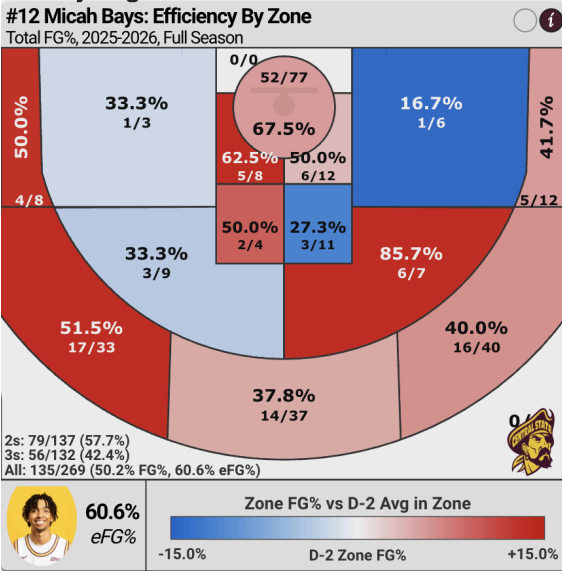
- CBB Only have stats for 10 games, not a full season
- High scoring efficiency
- Drawing foul at high rate
- Played on a fast paced team. Push after made basket
- Good defensive intensity and execution.
- High in Foul committed and Turnover

Micah Bays (D2, Central St. (OH)): SO, 6'2

Stats: 15.5 PPG | 1.8 APG | 3.5 REB | 1.8 STL | 2.1 TOV | 50.2 FG% | 42.4 3P% | 80 FT%
 Records: 12-17

J#	Player	Usage & Ball Handling								Shooting						Play Style									
		AST%		AST Ratio		TOV%		AST/TOV		USG%		TS%		2P%		3P%		FT%		ORB%		FTA Rate		3PAr	
Min	Max	Min	Max	Min	Max	Min	Max	Min	Max	Min	Max	Min	Max	Min	Max	Min	Max	Min	Max	Min	Max	Min	Max		
#12	Micah Bays	13.5%	69	11.3%	42	15.4%	47	0.83x	36	23.7%	81	65.4%	96	57.7%	79	42.4%	92	80.0%	77	4.6%	50	42.8%	73	49.1%	68

FG% By Region



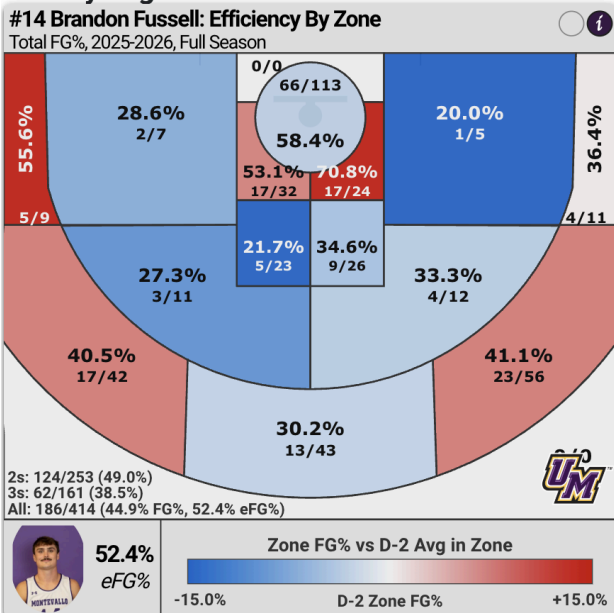
- Efficient at the rim, but don't get inside as much. Took more 3s than 2s in half court
- Get out on fastbreak, can both finish and spot up
- Start off slow off the bench. Score 10+ last 22 games
- Can shoot from deep, off screen (quick release)
- Concern: More TOV than AST

Brandon Fussell (D2, Montevallo): JR, 6'1

Stats: 17.6 PPG | 5.3 APG | 3.4 REB | 2 STL | 2.6 TOV | 44.9 FG% | 38.5 3P% | 82.4 FT%
Records: 22-9

J#	Player	Usage & Ball Handling								Shooting						Play Style									
		AST%		AST Ratio		TOV%		AST/TOV		USG%		TS%		2P%		3P%		FT%		ORB%		FTA Rate		3PAr	
Min	Max	Min	Max	Min	Max	Min	Max	Min	Max	Min	Max	Min	Max	Min	Max	Min	Max	Min	Max	Min	Max	Min	Max		
#14	Brandon Fussell	29.0%	97	22.7%	84	14.0%	56	2.09x	91	25.8%	88	56.1%	64	49.0%	52	38.5%	81	82.4%	78	1.8%	20	22.0%	32	38.9%	39

FG% By Region



- Efficient playmaker and scorer
- Active in gap and passing lane.
- Looking to attack the rim in transition
- Below average efficiency at the rim.

- Don't draw a lot of shooting fouls (3.1 FTA/G). The FTA rate drops when he is on the floor.
- High in Foul committed and Turnover

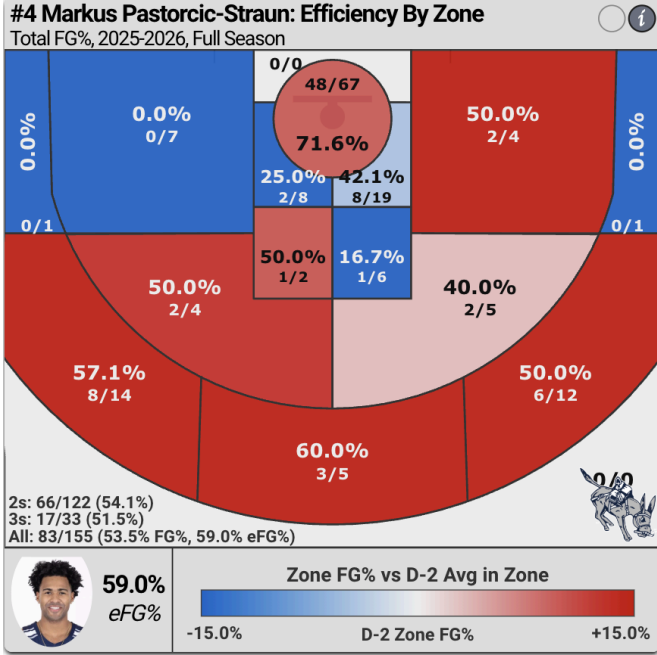
Markus Pastorcic-Straun (D2, Colo. Sch. of Mines): JR, 6'3

Stats: 20.3 PPG | 3.2 APG | 3.5 REB | 0.8 STL | 2.3 TOV | 53.5 FG% | 51.5 3P% | 67.5 FT%

Records: 16-16

J#	Player	Usage & Ball Handling						Shooting						Play Style											
		AST%	AST Ratio	TOV%	AST/TOV	USG%	TS%	2P%	3P%	FT%	ORB%	FTA Rate	3PAr												
#4	Markus Pastorcic-Straun	26.4%	95	15.0%	53	12.6%	68	1.40x	66	29.7%	98	63.5%	95	54.1%	75	51.5%	99	67.5%	28	4.0%	61	77.4%	99	21.3%	12

FG% By Region



- Only played 13 games (Played last game of the season after being out since 12/20/2025)
- Last game: 24 PTS in 23 mins with great efficiency.
- Don't shoot three many threes but efficiently.
- Efficient at the rim draws foul at a high rate. Draw 6.5 Foul/G (over 9 FTA/G)
- Concern: Low FT%, not as much sample size

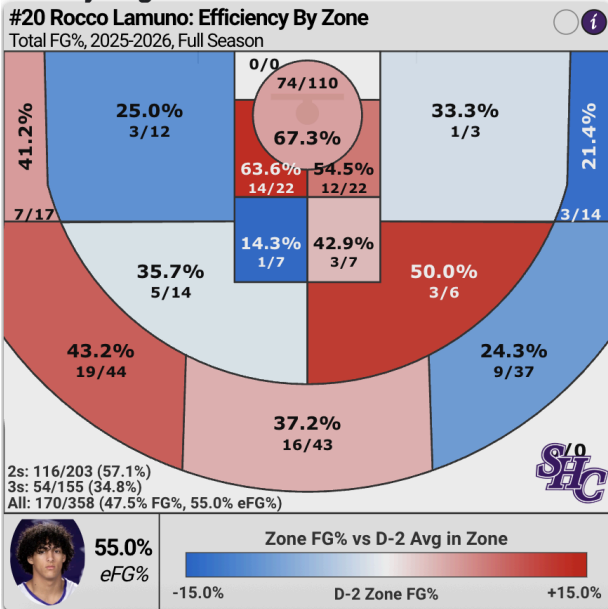
Rocco Lamuno (D2, Colo. Sch. of Mines): JR, 6'3

Stats: 18.5 PPG | 3.4 APG | 6.3 REB | 2.1 STL | 2.6 TOV | 47.5 FG% | 34.8 3P% | 86.6 FT%

Records: 4-24

J#	Player	Usage & Ball Handling								Shooting						Play Style									
		AST%		AST Ratio		TOV%		AST/TOV		USG%		TS%		2P%		3P%		FT%		ORB%		FTA Rate		3PAr	
		Min	Max	Min	Max	Min	Max	Min	Max	Min	Max	Min	Max	Min	Max	Min	Max	Min	Max	Min	Max	Min	Max	Min	Max
#20	Rocco Lamuno	20.1%	83	16.0%	58	14.6%	50	1.31x	60	22.6%	74	61.5%	90	57.1%	85	34.8%	60	86.6%	90	2.5%	34	39.7%	74	43.3%	48

FG% By Region



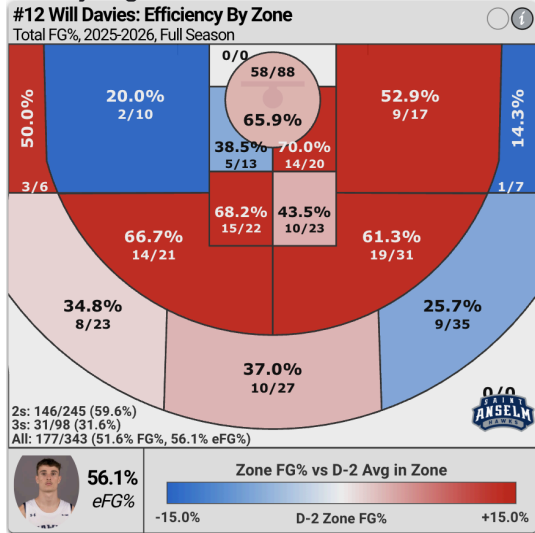
- Lefty
- Got out in transition a lot last year. Efficient when get into the rim (71 2P%) but also shot a lot of inefficient 3s in transition (28 3P%)
- Shoot more 3s in half court than 2s. Shoot 3s better in half court sets (36 3P%). Might settle for more mid range and floater in half court (44 2P%).
- Don't seem to drive and collapse the defense. Looking to score more.
- Jumpshot heavy. Like the fade away shot. Shot a lot of triple threat stand still threes.
- Active hand on passing lane
- Draw a lot of shooting foul (5 FTA/G)
- Good rebounder

Will Davies (D2, St. Anselm): SO, 6'4

Stats: 13.7 PPG | 7.1 APG | 3.3 REB | 0.8 STL | 3.2 TOV | 51.6 FG% | 31.6 3P% | 77.9 FT%
Records: 25-8

J#	Player	Usage & Ball Handling										Shooting						Play Style							
		AST%		AST Ratio		TOV%		AST/TOV		USG%		TS%		2P%		3P%		FT%		ORB%		FTA Rate		3PAr	
	Will	Min	Max	Min	Max	Min	Max	Min	Max	Min	Max	Min	Max	Min	Max	Min	Max	Min	Max	Min	Max	Min	Max	Min	Max
#12	Will Davies	33.9%	99	32.6%	98	21.6%	14	2.24x	93	20.5%	60	59.3%	82	59.6%	90	31.6%	42	77.9%	63	2.8%	41	25.1%	39	28.6%	22

FG% By Region



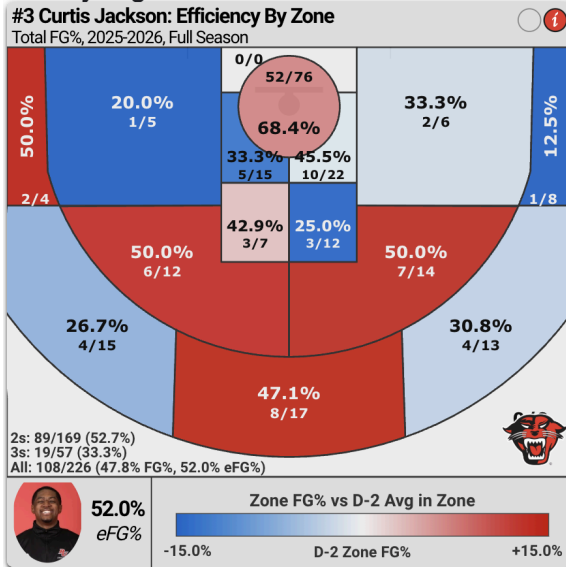
- Conferences Player of the Year
- Consistent and efficient player. Good size, physicality.
- Play in a motion offense
- Generate just under 8 PPG from collapse the defense and kick out. Looking to pass ahead on fastbreak. Keep his dribble alive looking for the best option.
- Seems to play patiently at his own pace. Crafty finisher
- Higher mid range attempts, but efficient
- Great vertical defender at the rim for his size.
- Concern: don't draw a lot of fouls, attempt tough passes sometimes, don't seem to have skill to get by defenders.

Curtis Jackson (D2, Davenport): JR, 6'0

Stats: 12.4 PPG | 5.3 APG | 5.5 REB | 1.9 STL | 2.9 TOV | 47.7 FG% | 32.8 3P% | 78.8 FT%
Records: 14-15

J#	Player	Usage & Ball Handling										Shooting						Play Style							
		AST%	AST Ratio	TOV%	AST/TOV	USG%	TS%	2P%	3P%	FT%	ORB%	FTA Rate	3PAr												
#3	Curtis Jackson	34.2%	99	28.2%	95	21.4%	15	1.83x	84	22.1%	71	58.4%	77	52.8%	70	32.8%	47	78.8%	66	3.8%	58	47.7%	86	25.7%	18

FG% By Region



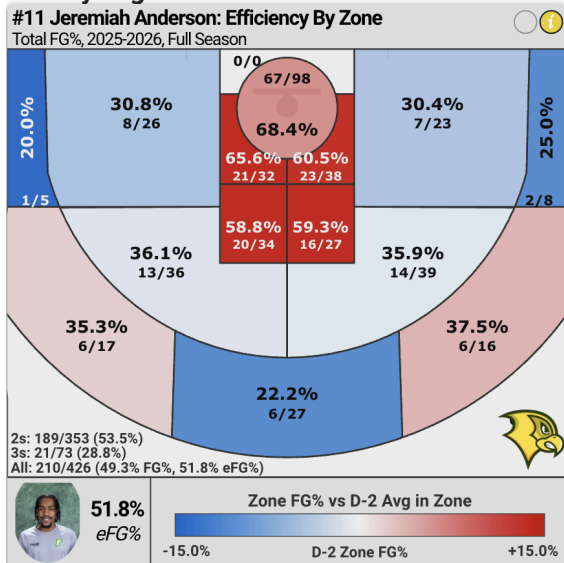
- Most of his assist come from attack the rim
- Creative passer, throw a lot of lob/"highlight play" passes
- Create most of his own shot, don't shoot a lot of 3s
- Good rebounder for his size
- Draw fouls and get to the free throw line at a higher rate
- Active hands in gap and passing lane, get out in transition
- Concern: High TOV

Jeremiah Anderson (D2, Felician): JR, 6'1

Stats: 19.8 PPG | 5.4 APG | 5.3 REB | 2.5 STL | 2.8 TOV | 48.3 FG% | 28 3P% | 83.7 FT%
Records: 26-4

J#	Player	Usage & Ball Handling										Shooting						Play Style							
		AST%	AST Ratio	TOV%	AST/TOV	USG%	TS%	2P%	3P%	FT%	ORB%	FTA Rate	3PAr												
#11	Jeremiah Anderson	29.3%	98	20.7%	78	13.6%	59	1.92x	86	28.1%	95	55.7%	61	52.6%	68	28.0%	27	83.7%	82	4.7%	73	28.5%	49	17.3%	8

FG% By Region



Miles Gurske (D2, Mont. St. Billings): JR, 6'1

Stats: 15.1 PPG | 3 APG | 5.2 REB | 2 STL | 1.4 TOV | 42.5 FG% | 34.8 3P% | 81.5 FT%

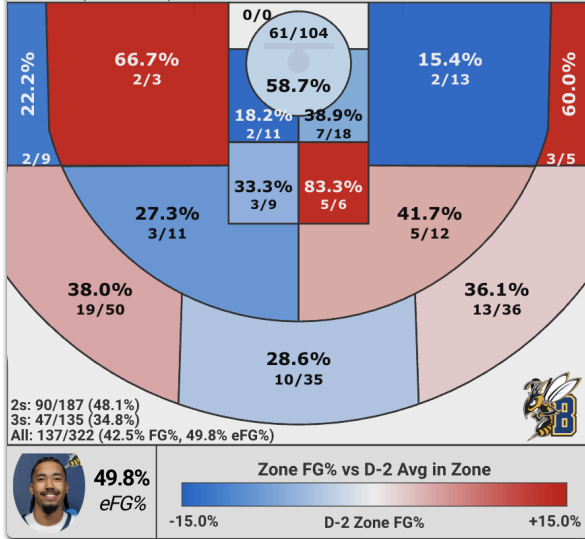
Records: 20-11

J#	Player	Usage & Ball Handling						Shooting						Play Style											
		AST%	AST Ratio	TOV%	AST/TOV	USG%	TS%	2P%	3P%	FT%	ORB%	FTA Rate	3PAr												
#2	Miles Gurske	18.9%	79	16.7%	61	9.5%	88	2.10x	91	24.2%	82	55.3%	59	48.1%	47	34.8%	60	81.5%	75	3.9%	60	33.5%	62	41.9%	46

FG% By Region

#2 Miles Gurske: Efficiency By Zone

Total FG%, 2025-2026, Full Season



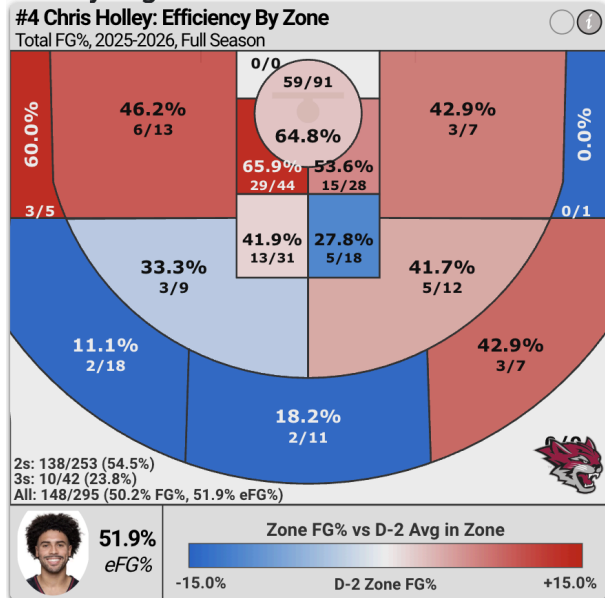
Chris Holley (D2, Chico St.): SR, 6'2

Stats: 16.1 PPG | 5 APG | 5 REB | 0.8 STL | 2.1 TOV | 50.2 FG% | 23.8 3P% | 74.3 FT%

Records: 8-19

J#	Player	Usage & Ball Handling										Shooting						Play Style							
		AST%		AST Ratio		TOV%		AST/TOV		USG%		TS%		2P%		3P%		FT%		ORB%		FTA Rate	3PAr		
Min	Max	Min	Max	Min	Max	Min	Max	Min	Max	Min	Max	Min	Max	Min	Max	Min	Max	Min	Max	Min	Max	Min	Max		
#4	Chris Holley	28.1%	97	23.2%	85	12.7%	67	2.38x	95	22.9%	75	56.4%	66	54.5%	76	23.8%	15	74.3%	49	4.3%	66	36.9%	69	14.2%	5

FG% By Region

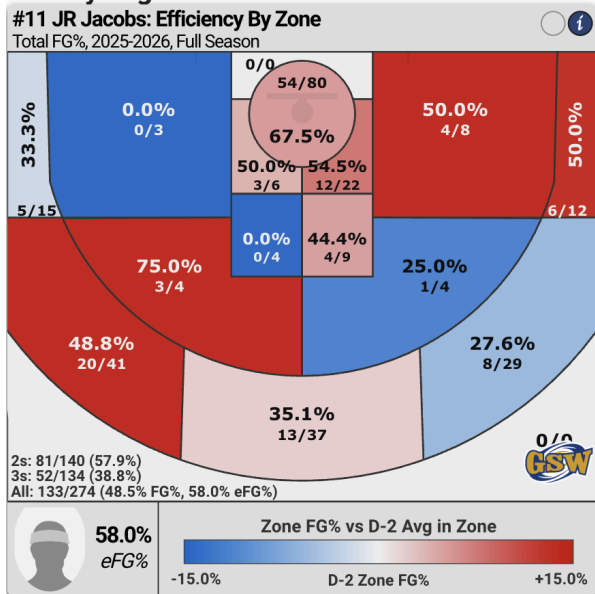


JR Jacobs (D2, Ga. Southwestern): JR, 5'11

Stats: 13.4 PPG | 4.6 APG | 3.8 REB | 1.3 STL | 1.9 TOV | 48 FG% | 38.6 3P% | 73.1 FT%
Records: 16-13

J#	Player	Usage & Ball Handling										Shooting						Play Style							
		AST%		AST Ratio		TOV%		AST/TOV		USG%		TS%		2P%		3P%		FT%		ORB%		FTA Rate	3PAr		
Min	Max	Min	Max	Min	Max	Min	Max	Min	Max	Min	Max	Min	Max	Min	Max	Min	Max	Min	Max	Min	Max	Min	Max		
#11	JR Jacobs	28.2%	97	26.0%	92	14.7%	50	2.39x	95	21.0%	63	59.8%	84	57.0%	84	38.6%	81	73.1%	45	2.2%	27	22.6%	33	49.0%	58

FG% By Region



- Concern: inconsistent from game to game